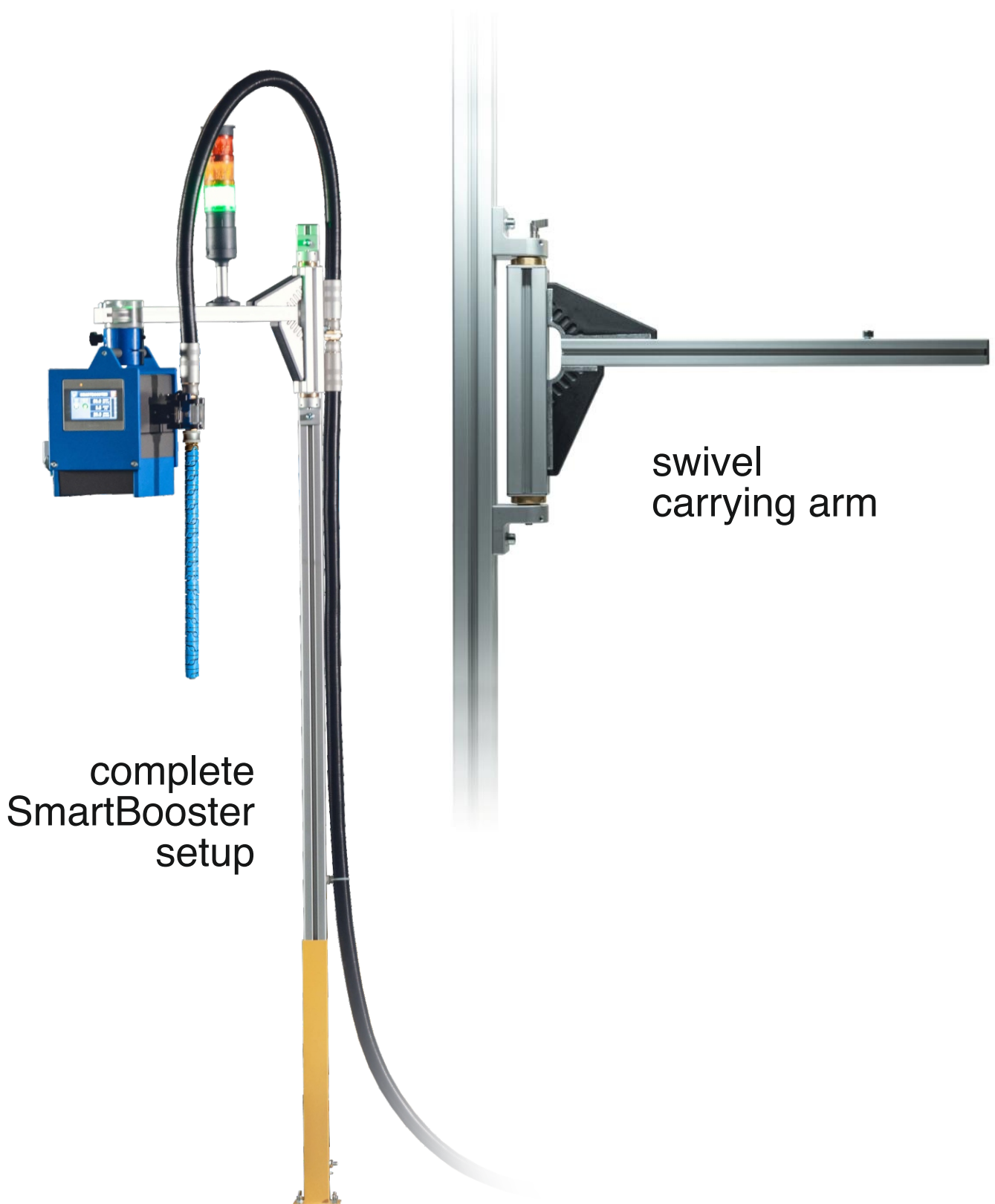




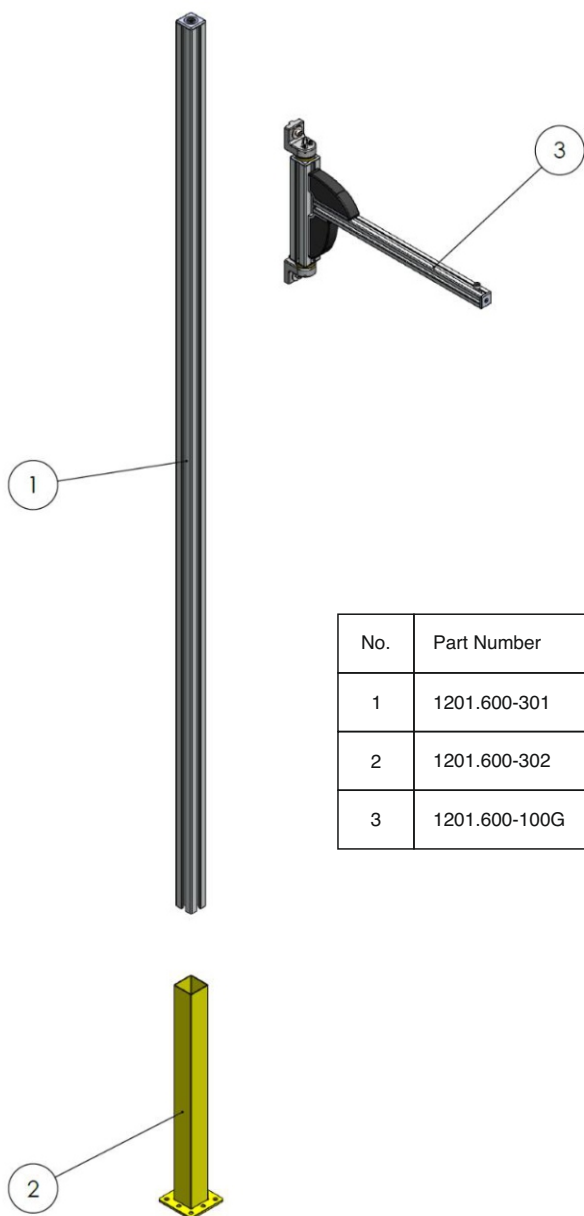
# AWDS-Technologies SRL

Advanced Wire Delivery Systems

## SmartBooster Installation kit

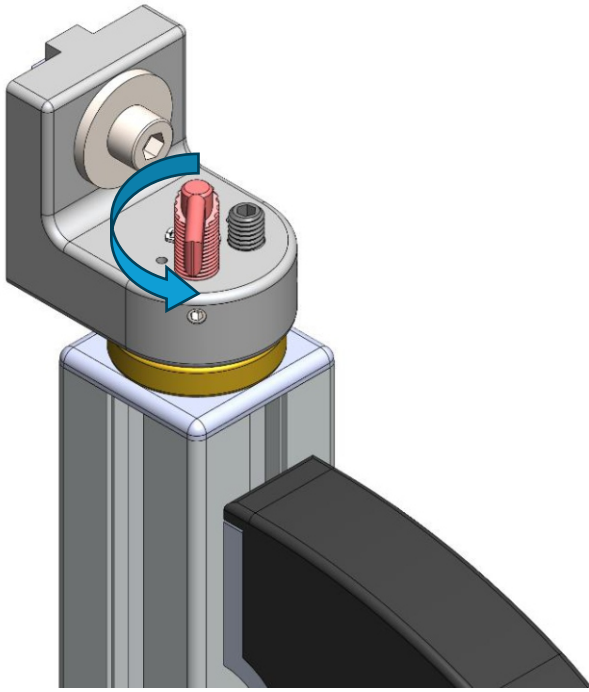


# 1. Installation Components

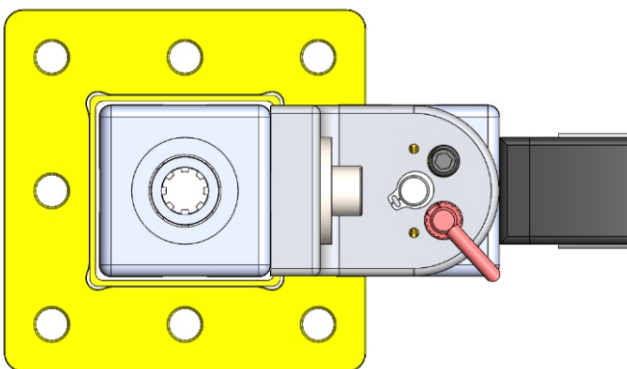


No.	Part Number	Description (EN)	Weight [kgs]	Quantity
1	1201.600-301	2000 [mm] stand profile (45x45)	3,10	1
2	1201.600-302	Stand floor base	1,40	1
3	1201.600-100G	Carrying arm (profile 30x30) with locking and bearings for swivel sideways movements	1,90	1

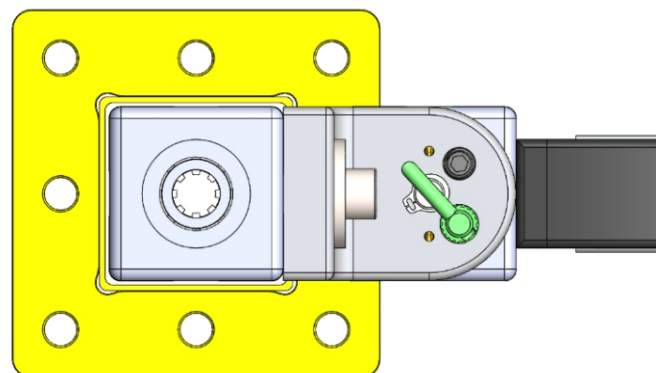
## 2. Swivel Supporting Arm adjustment



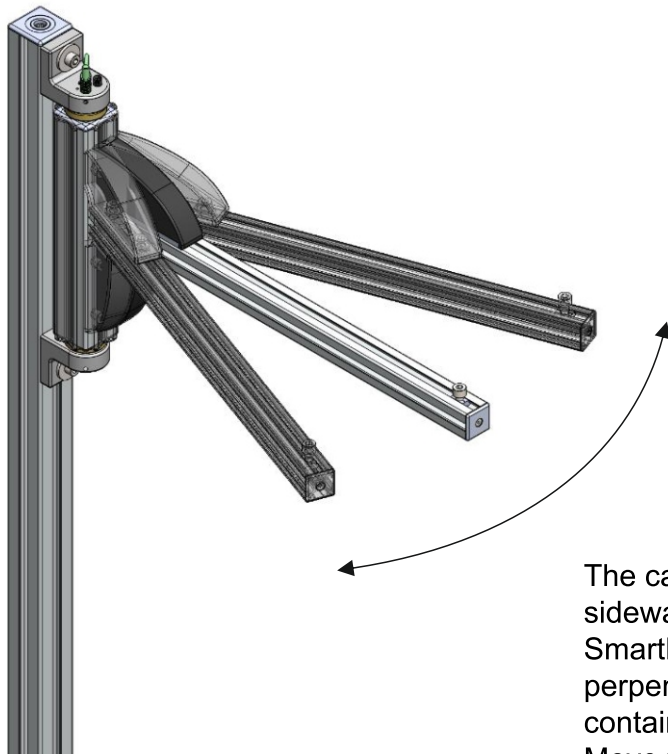
Rotate the lever anti-clockwise to unlock the swivel arm movement



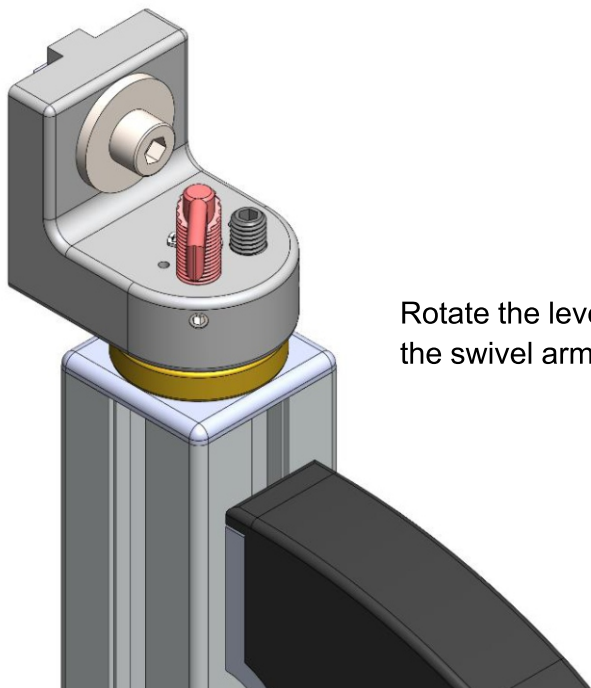
**Arm locked position**



**Arm unlocked position**

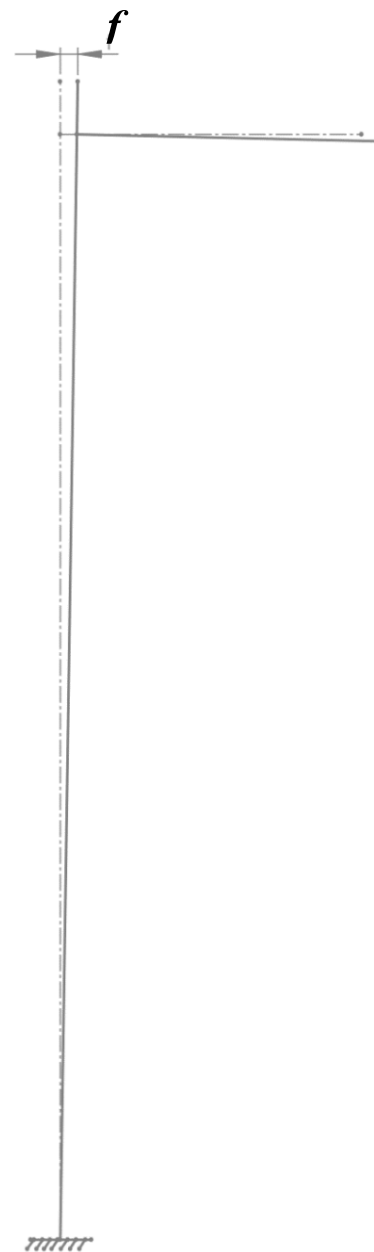
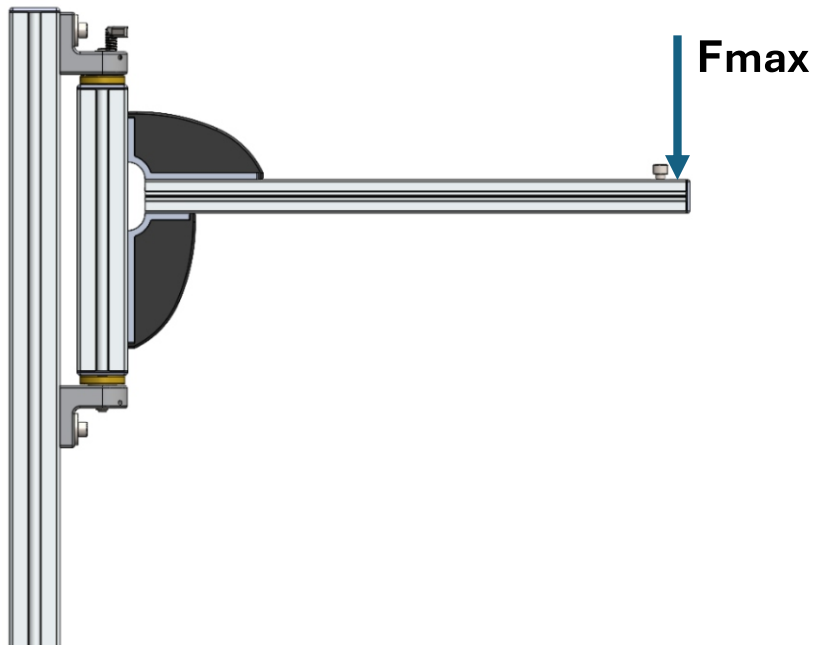


The carrying arm can be rotated sideways to ensure that the SmartBooster always stays perpendicular on top of the drum containing the welding wire. Move the arm to the desired angle and position.



Rotate the lever clockwise to lock the swivel arm movement

### 3. Swivel Supporting Arm load

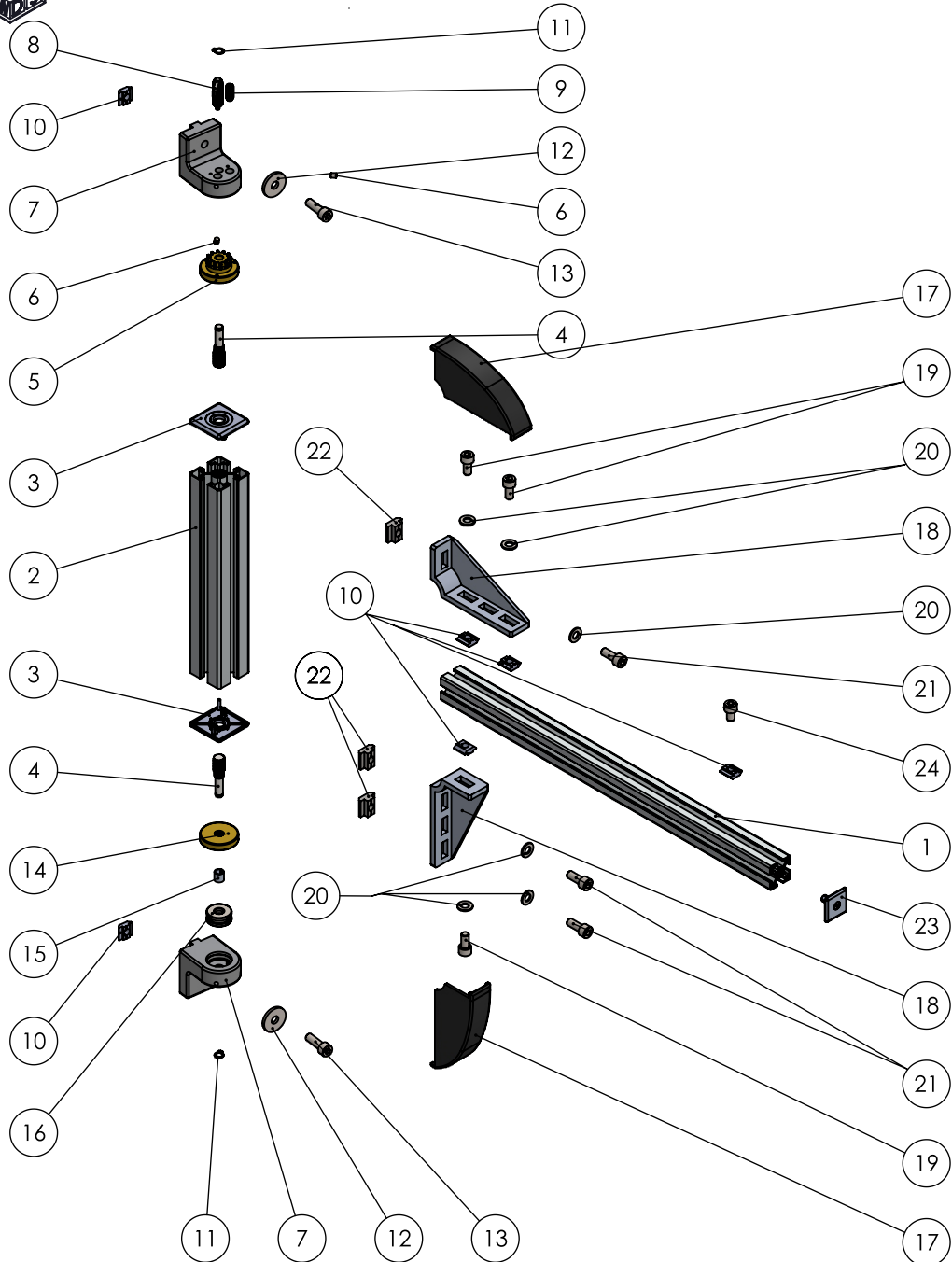


#### Maximum load permitted

	Max value	Unit
$F_{max}$	225	[N]
$f$	35	[mm]



Copyright AWDS-Technologies srl - 30/03/2021 (all rights reserved)



Code

1201.600-100G

Mass[g]

Description (EN)

ITEM NO.	CODE	DESCRIPTION		QTY
1	1201.600-101	Strut profile 30x30	Standard BOSCH REXROTH	1
2	1201.600-303	Strut profile 45x45	Standard BOSCH REXROTH - Customized by AWDS	1
3	1201.600-320	Cover cap 45 x 45	Standard BOSCH REXROTH - Customized by AWDS	2
4	1201.600-109	Threaded pin	AWDS Proprietary part	2
5	1201.600-111	Stop disk	AWDS Proprietary part	1
6	ISO 4026 - M5 x 6	Grub socket screws	Standard market item	2
7	1201.600-108	Fixed part	AWDS Proprietary part	2
8	1201.600-128	Locking indexing plungers, M10	Standard ELESA	1
9	1201.600-113	Spring plungers, M10	Standard market item	1
10	1201.600-129	Sliding block profile slot 8	Standard BOSCH REXROTH	6
11	DIN 471 - 8 x 0.8	Segeer	Standard market item	2
12	ISO 7094-8	Plain washer xlarge grade c	Standard market item	2
13	ISO 4762 M8 x 25	Hexagonal socket head cap screws	Standard market item	2
14	1201.600-110	Spacer	AWDS Proprietary part	1
15	1201.600-114	du bushings for pin	Standard market item	1
16	51200	Axial deep groove ball bearing	Standard market item	1
17	1201.600-106	Cover cap for bracket 30/120	Standard BOSCH REXROTH	2
18	1201.600-103	Bracket 30/120	Standard BOSCH REXROTH	2
19	ISO 4762 M8 x 16	Hexagonal socket head cap screws	Standard market item	3
20	ISO 7089 - 8	Plain washer normal grade a	Standard market item	6
21	ISO 4762 M8 x 20	Hexagonal socket head cap screws	Standard market item	3
22	1201.600-130	Sliding block profile slot 10	Standard BOSCH REXROTH	3
23	1201.600-107	Cover cap 30x30	Standard BOSCH REXROTH	1
24	ISO 4762 M8 x 12	Hexagonal socket head cap screws	Standard market item	1

Swivel support arm for SmartBooster

Description (en)

Swivel support arm

M. Brunori

Designer

1:5

Scale

A3

Size

mm

Measure