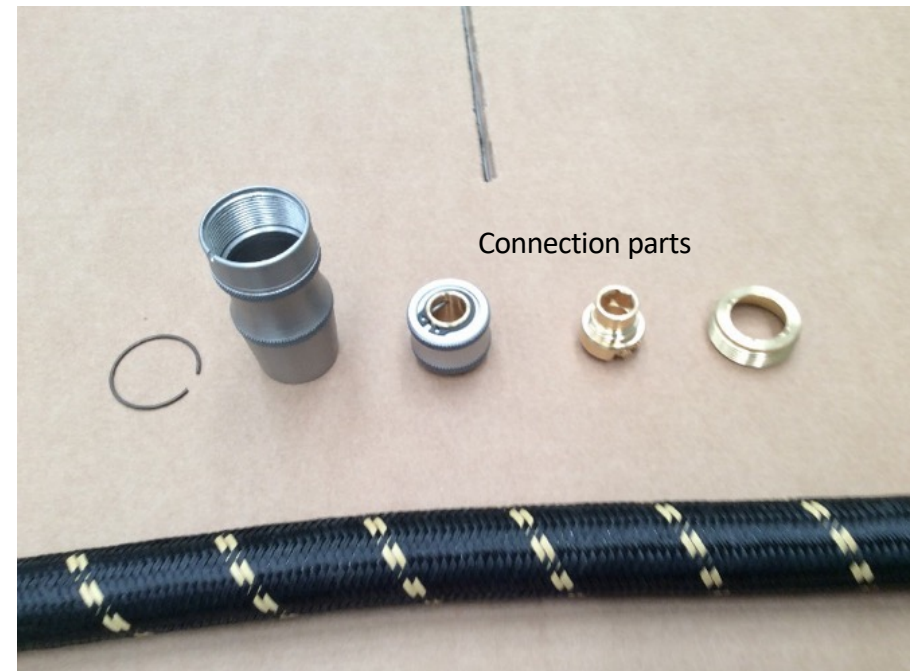
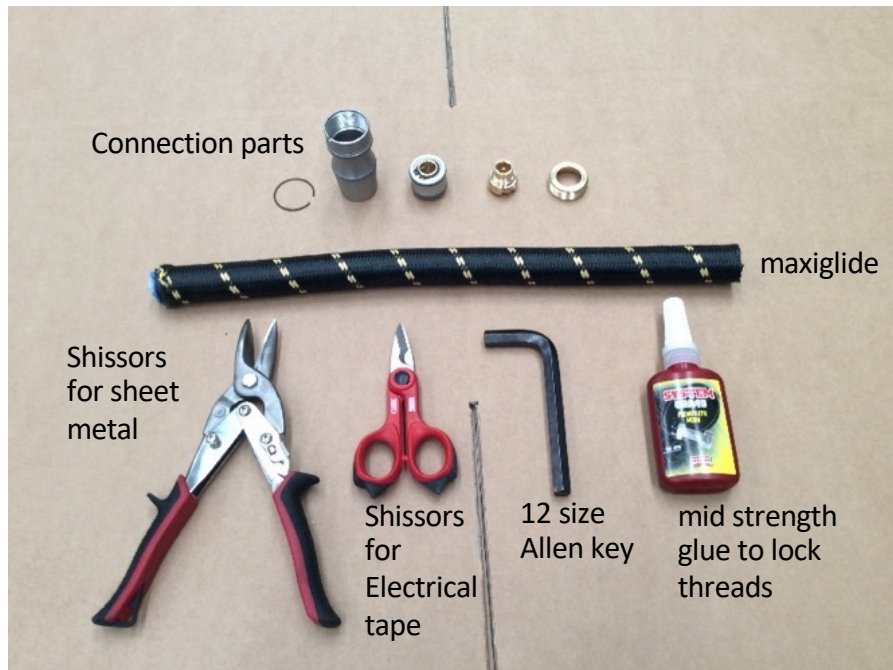




Maxiglide HD Quick End Connectors: assembly instructions

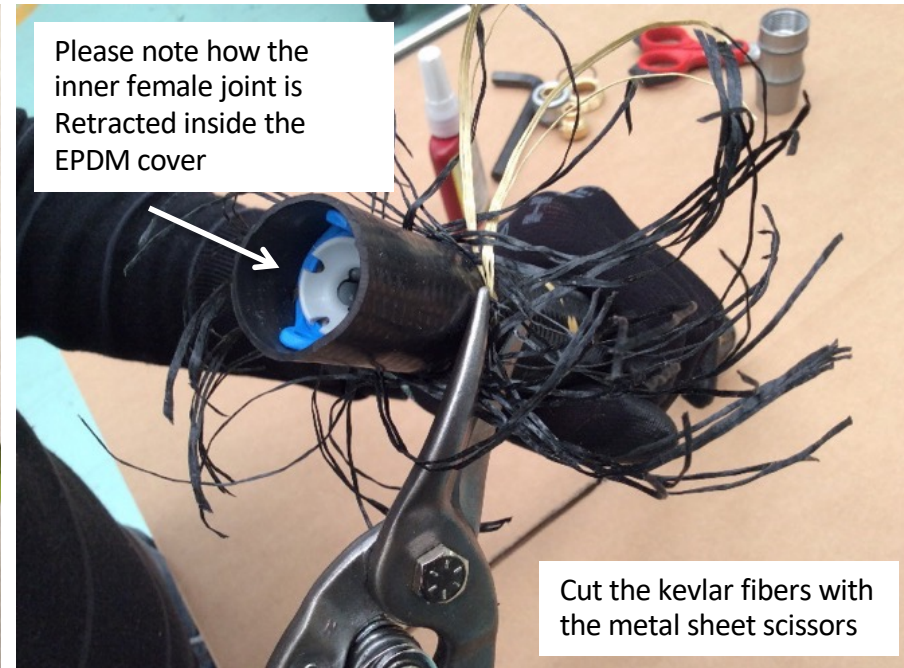
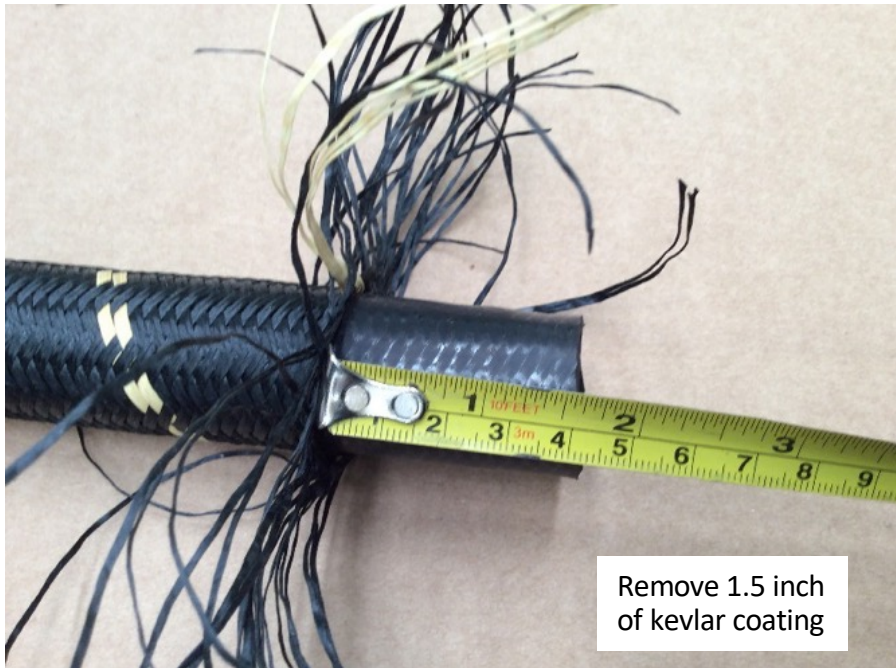
1. Tools and Components needed





Maxiglide HD Quick End Connectors: assembly instructions

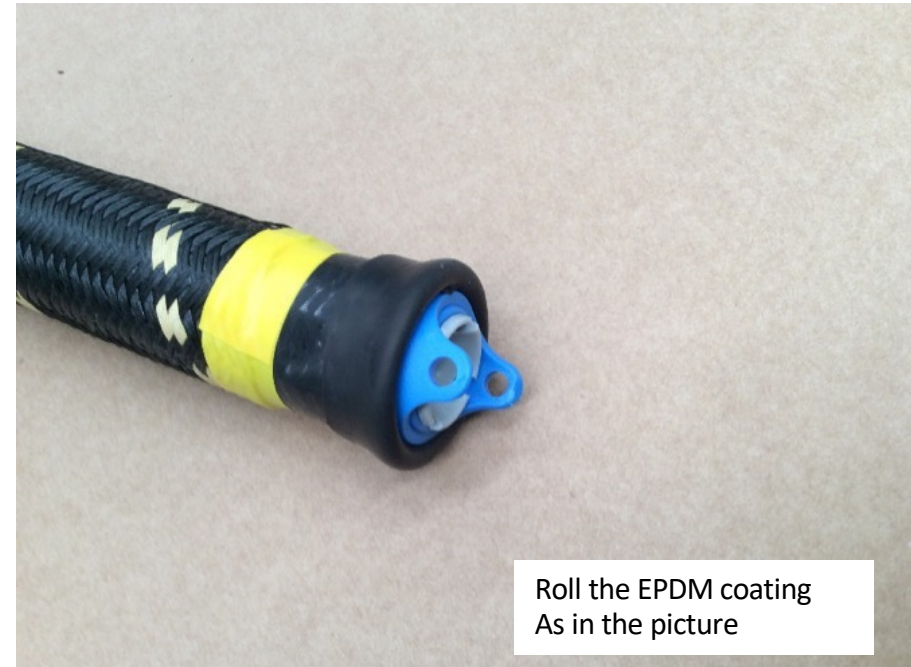
2. Remove the Kevlar coating





Maxiglide HD Quick End Connectors: assembly instructions

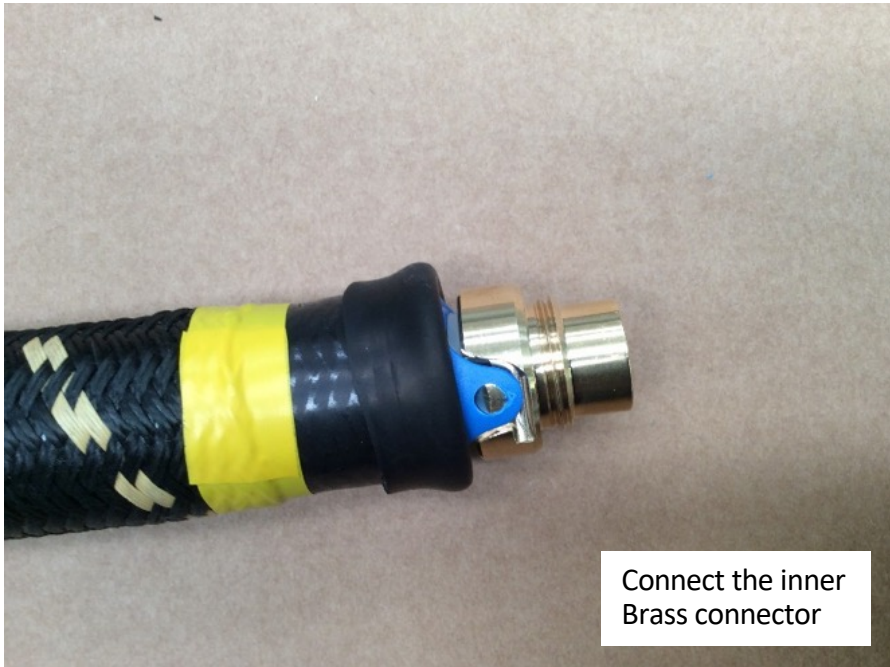
3. Prepare Maxiglide for connectors





Maxiglide HD Quick End Connectors: assembly instructions

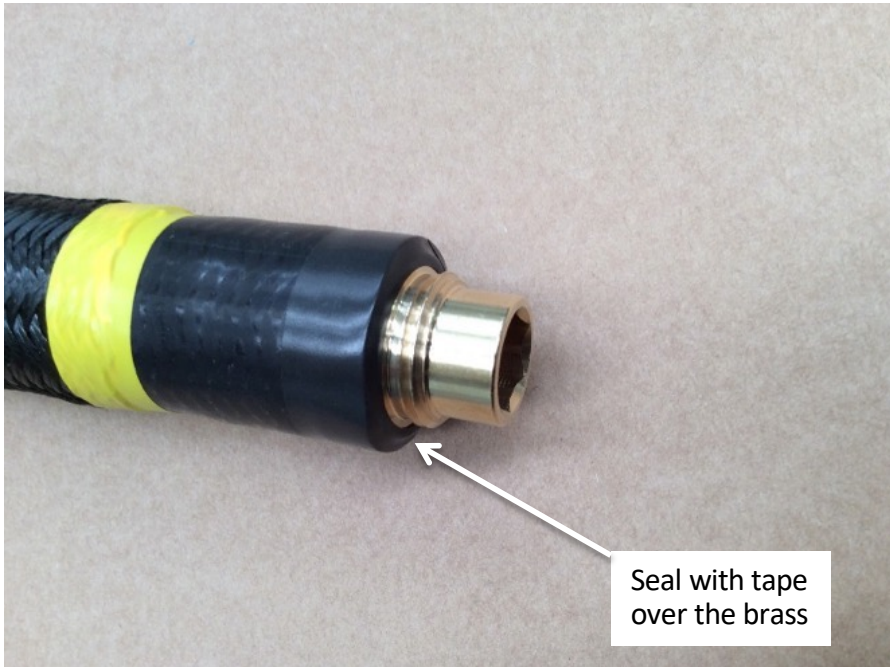
3. Attach the inner connector





Maxiglide HD Quick End Connectors: assembly instructions

3. Attach the outer Connector



Seal with tape over the brass

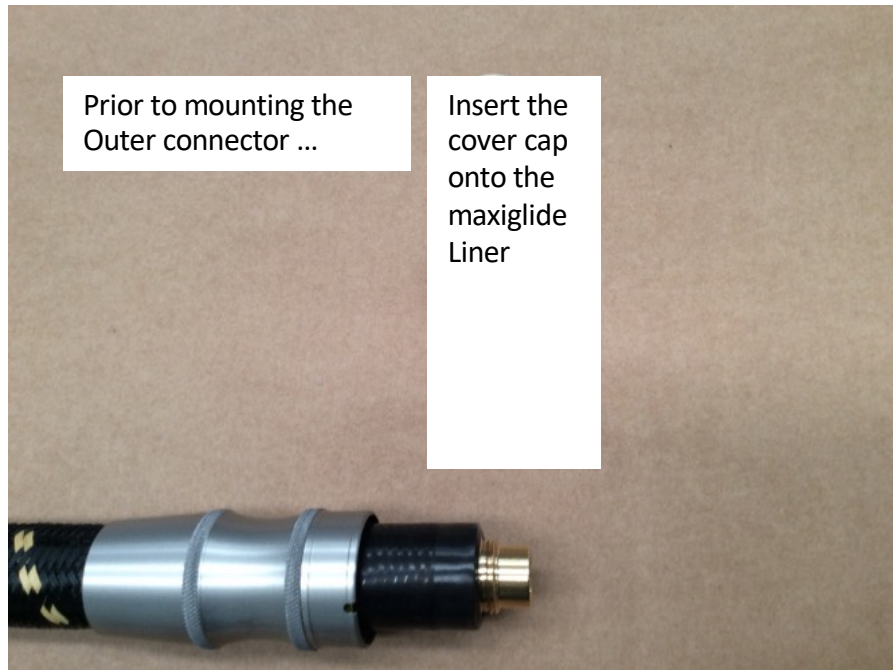


You can use the cap with anti-kink support (recommended at the front feeder end) or the cap alone (for the back end)



Maxiglide HD Quick End Connectors: assembly instructions

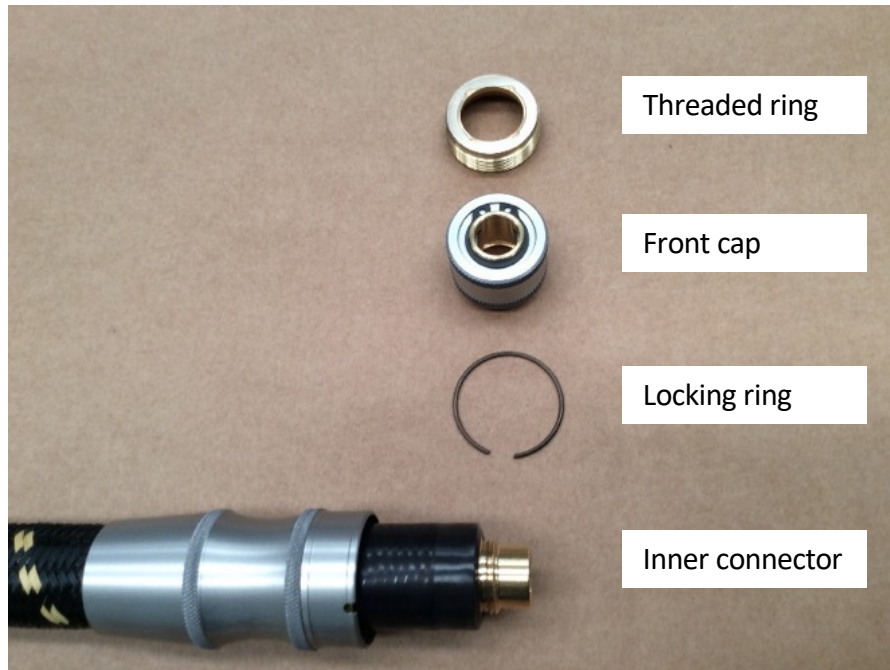
3. Attach the outer connector





Maxiglide HD Quick End Connectors: assembly instructions

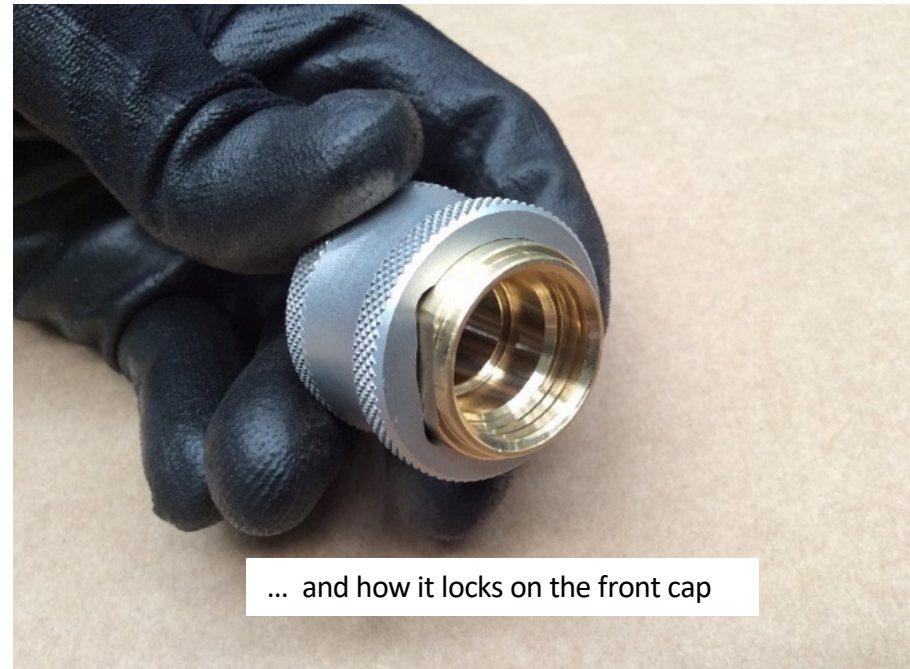
3. Attach the outer connector





Maxiglide HD Quick End Connectors: assembly instructions

3. Attach the outer connector





Maxiglide HD Quick End Connectors: assembly instructions

3. Attach the outer connector





Maxiglide HD Quick End Connectors: assembly instructions

3. Attach the outer connector





Maxiglide HD Quick End Connectors: assembly instructions

4. Mount the connector cap





Maxiglide HD Quick End Connectors: assembly instructions

4. Mount the connector cap

